



Head Teacher: Kirsti Ashman
Dill Avenue, Cheltenham, GL510ES
T 01242 525616
E head@hestersway.gloucs.sch.uk
WWW. hestersway.gloucs.sch.uk

Wednesday 30th September 2020

Dear Parents/Carers,

Dates for Diary

Saturday 10th October – World Mental Health Day
Monday 12th October - Inset day - no pupils at school – confirmed!
Wednesday 14th October – Harvest Festival/Sukkot Feast – Jewish – internal assembly
Week Commencing 05.10.20 and 19.10.20 – Parent contact calls TBA
Friday 23rd October – Last day of Autumn Term 1
Monday 2nd November – First day of Autumn Term 2
Monday 16th November – Inset day - no pupils at school – confirmed!
Thursday 19th November – Individual Photographs; no sibling photos this year
Thursday 26th November – Flu Vaccinations
Friday 18th December – Last day of Term 2
Monday 4th January – First day of Term 3

Attendance

We started the term off well and in this first week of term we had 95% attendance, week 2 it dropped, as we started to see child become ill with the usual child and seasonal illnesses. From the start of term to now our attendance is 94.6%. Thank you for doing all that you can to get the children to school, in a safe way. As attendance is statutory we are all held to account for this. We also want the children in school learning and appreciate that every child will have to “catch up” with the curriculum and their own learning.

These are challenging times, as we enter the autumn there will be colds, coughs and sneezes, as well as other illness like tonsillitis and strep throat that may present themselves as potential COVID-19 symptoms. A doctor recently explained that initially they are not always able to distinguish between these illnesses and COVID-19, so it is better to check and be safe.

We must remain vigilant and ensure that children and their families are tested, as needed, to keep everyone safe. However, we have been made aware of varying experiences in getting tests with some able to book the same day and get results back in 2-3 days and other waiting a week or more to get a home testing kit. We would urge you to try your best to get these tests and let us know if you are having difficulties.

Assemblies

As we are not able to join together in the school hall for assemblies, in order to protect our “Class Bubbles”, we are having “virtual” assemblies. Either Miss Ashman, or the assembly lead uses an internal video system to link the class boards so that we can all see each other and learn through shared messages. Some assemblies this term:

- Vision and Values
- School Council
- Roald Dahl Day
- Resilience
- Assessment for learning – “Learning Zones”
- World Mental Health Day
- Sukkot and Harvest Festival
- Celebration on Friday in class



COVID-19 Symptoms

Individuals will need a test if they have any of the following:
a high temperature, hot to the touch on chest or back - no need to measure temperature
a new, continuous cough
a loss, or change in sense of smell or taste

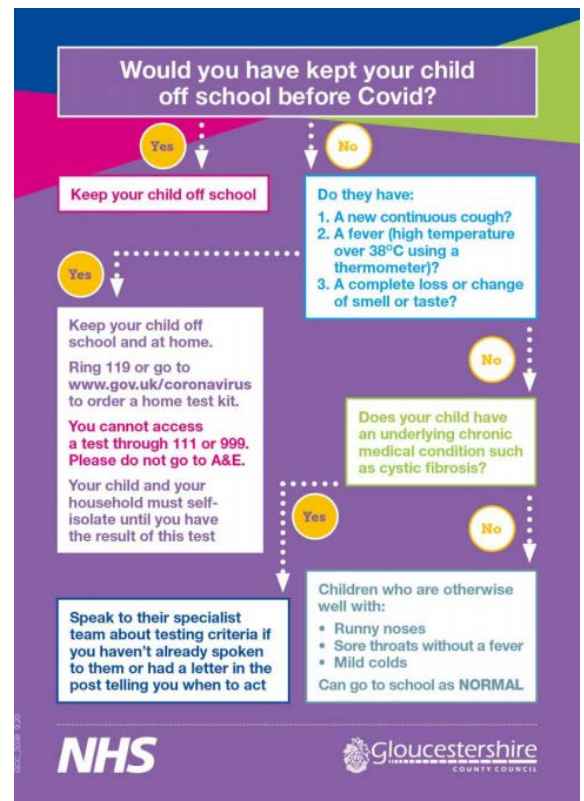
Getting a Test and Self-Isolating

If your child or any member of the household is showing any symptoms call 119 or visit the 119 website to book to attend a GCC mobile testing site or get a home testing kit. Please self-isolate the household until the test results are negative or for 14 days.

<https://www.nhs.uk/conditions/coronavirus-covid-19/testing-and-tracing/get-a-test-to-check-if-you-have-coronavirus/>

<https://www.gov.uk/get-coronavirus-test>

<https://www.gloucestershire.gov.uk/covid-19-information-and-advice/mobile-testing-unit-locations/>



Sharing Cars and Lifts to School

If you are in close contact with someone who has been asked to self-isolate and get a test, then you will be considered as part of their "Support Bubble" and will be asked for your child and your household to self-isolate until their test results are returned negative. <https://www.gov.uk/guidance/coronavirus-covid-19-safer-travel-guidance-for-passengers>

Home Learning Offer

Whilst your child is absent from school, we will provide work for them. Please see our latest Home Learning Offer (September 2020). When self-isolating we will get a two-week pack together, as we appreciate that working online can be challenging. Our previous questionnaire returns shared that paper packs are preferred by our parents/carers. We will try to get these sent out with your child, if your child is sent home from school. Alternatively, they can be collected by a family member or friend from outside the school office/car park area. Please contact the school office if you have any problems in getting work packs.

Gates – Start/End of School Day

The KS2 Village Road gate at morning "drop off" has quickened with the new times and classes seem to be coming in at the correct time. Collection time at the end of the day has also become smoother – thank you! It is easier to "**drop and go**", safely.

The KS1, Milne Walk pathway is more challenging with limited space and a few parents not following the routines and times that we have shared. Please use the pathway as "**one-way**" and don't cross the paths of others. If this does not improve, we may have to lengthen the times between drop offs or ask for PCSO support on the public pavement/highways.

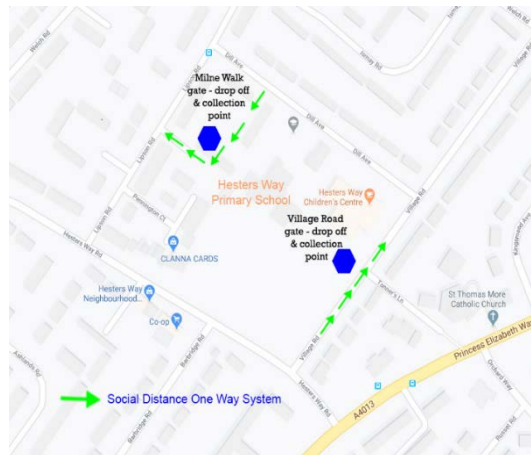
Please, please, please can you keep to the **correct time** for drop off and collection. This is to keep the children and you safe, potentially prevent the virus spreading and lessen illness in school. This will mean that we will have more children in school to teach, you can continue with your work and family commitments.

If you have more than one child - the time is that of the earliest child in the morning and the latest child at the end of the day.

Thank you to those parents now **wearing masks** and ensuring that they are observing social distancing measures. We should all still be trying to stay **2 metres** away from each other. When measured out this is a considerable distance. The British people are renowned for queuing, politely, and if there was ever a time to do this it is now.

There have been a couple of occasions, when we have not let children attend school as they have shown potential COVID-19 symptoms at the gate. You could be stood next to someone who is potentially carrying COVID-19 and not realise it. Some people are asymptomatic and so carry it without showing any symptoms.

	Gate/Entry time	Gate/Leave
Reception	8.45am Milne Walk	3.00pm Milne Walk
Year 1	9.05am Milne Walk	2.55pm Milne Walk
Year 2	8.55am Milne Walk	2.45pm Milne Walk
Year 3	8.45am Village Road	2.45pm Village Road
Year 4	8.50am Village Road	2.50pm Village Road
Year 5	8.55 am Village Road	2.55pm Village Road
Year 6	9.00 am Village Road	3.00pm Village Road



Rain/Snow

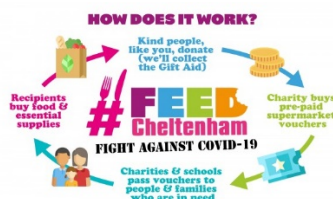
As the weather has turned, we have planned for wet mornings and playtimes. The children will enter school but may have to wait to access their lockers as we have specific timings for accessing the corridors, to protect our "Class Bubbles". The end of the day, is a little different though, so please ensure that your child has a coat in school every-day.

Respect our Neighbours and Community

Please can we ask that we all respect our neighbours and that people do not lean on fences or park in front of our neighbours homes during the drop off and collection times? Our neighbours need to be-able to get in and out of their homes and driveways, whenever they need. If we receive any further complaints the PCSOs or police will be contacted as this is a public anti-social issue.

Harvest Festival Donations

We are aware that many of our own families, as well as others, are having financial difficulties, especially at this challenging time. So, this year we will ask our school community, who would like to donate, to give to the #Feed Cheltenham charity. They have supported many of our families over the "Lockdown" period by giving £25 food vouchers for local supermarkets. We would like to thank them and give something back. <https://www.crowdfunder.co.uk/feedcheltenham> .



Please email head@hestersway.gloucs.sch.uk or pastoralsupport@hestersway.gloucs.sch.uk if you or anyone you know in the school community may be in need of a supermarket voucher. The person has to be willing for us to share their name and address for the voucher to be posted. Most local supermarkets are included so please name the supermarket too. This will be treated confidentially.

There is also a Local Authority financial funding form that we can email to parents in financial need to help with costs such a gas, electric and other bills. Please email the addresses above for details. We will then support the application and make any recommendations. It is considered and approved by GCC. <https://www.gloucestershire.gov.uk/health-and-social-care/gloucestershire-welfare-support-scheme/>

Kind regards, Kirsti Ashman (Head Teacher)



Home Learning Offer – September 2020

Since our return to school in September, attendance has returned to a statutory status in the Autumn Term. Children should be absent from school, for limited amounts of time, due to seasonal illness or COVID testing/self-isolation.

If a child has authorised absence due to extremely vulnerable shielding status (authorised by medical professionals) then continuous work will be provided by the class teacher.

We know that children need time to recuperate from being poorly and they may not be well enough to complete school work. Home-learning should not put additional pressures on a child's well-being, or indeed the family. However, if they can, we would like children to take every opportunity to learn.

Our aim is that the pupils at our school have the opportunity to work at home on skills-based learning that they can practise and repeat, such as times-tables and spellings. Reading is very important and there are e-books that we have shared on our home learning page. We will try to send books home at the start of the absence.

Teachers will be planning, teaching and assessing in class. We want to provide “blended learning” so that when children are absent from school, they do not miss out and can join in quickly with the planned learning journey.

As such, we have decided as a school that we will provide:

- A Talk for Writing Booklet – a sequence of work based on the T4W process
<https://www.talk4writing.com/home-school-units/>
- The current Talk for Writing story being learnt in class
- A White Rose Maths Booklet – for the current unit/concept being taught in class
<https://whiterosemaths.com/homelearning/>
- The Oak Academy website, links and work for foundation subjects
<https://www.thenational.academy/>
- Rock Stars Times Tables site for online times-tables learning and challenges
<https://trockstars.com/>
- The Spelling Shed for children to learn age-related spellings – details to be confirmed and shared
<https://www.spellingshed.com/en-us>

We are aware that IT and virtual learning can be a barrier. If a family have a laptop, a parent/carer may need to use it to work at home. There may be more than one child at home with limited technology and internet connection. The scenarios and situations are varied. Sometimes phones are used.

The links to the websites used will be shared for those who can access the online lessons. However, as previously requested by parents we will continue to offer paper packs. The demand for these may be high. We will do our utmost to have packs ready to go home with children leaving school due to illness. Whilst we understand that the family must self-isolate, we may have to ask that friends or family members collect packs from our school office/carpark area.

We set up homelearning@hestersway.gloucs.sch.uk over “Lockdown” for sharing work and feedback. New class home-learning email addresses will follow. You can share photos of your child's work. Please remember that whilst we would hope to answer questions and queries that the teaching staff will be teaching during the day and have limited time before and after school for a personalised feedback approach. We would ask that work packs and school resources be returned to school when your child returns to school.