



Head Teacher: Kirsti Ashman
Dill Avenue, Cheltenham, GL510ES
T 01242 525616
E head@hestersway.gloucs.sch.uk
WWW. Hestersway.gloucs.sch.uk

Friday 23rd April 2021

Dear Parents/Carers,

Dates for Diary 2021

Monday 19th April – Start of Summer Term 5 – see gate times below
Friday 23rd April – St George's Day
Monday 3rd May – Bank holiday – School closed
Wednesday 5th May – World Maths Day
Friday 28th May – Last Day of Summer Term 5

Welcome Back

The children have returned back to school, brilliantly. We hope that you all got some time to spend with family and friends, with the outdoor meeting rules changing, over the Easter break.

When the whole school returned on 8th March, our main priority was to settle the children back, considering their well-being. The children had to rebuild their stamina, to improve their concentration and focus on learning. The "normal" school day is so busy with time-tabled subjects, so the teachers adapted the timetable and included "Desk to daily mile", outdoor learning sessions and regular movement breaks.

This term the children seem refreshed after the Easter Break and have returned to school ready to learn, more than ever!

We would appreciate everyone's help and support, to have as many pupils attending school this term, as possible. The teaching staff have been working hard to plan in any lost teaching and learning, from National Lockdown 3, through the "Recovery Curriculum".



Interventions are in place for identified pupils and some after school clubs have been organised by class bubble teaching staff, to support additional learning time for specific targets. You will be contacted directly about these sessions.

Here's to a successful summer term of learning, learning, learning!

Curriculum

In the mornings, Phonics, English and Maths are taught. In the afternoons, Foundation Subjects are taught. Every week, the children have Science, Sports/PE and PSHE sessions. Then we timetable the other subjects for classes to use the different resources and areas around school. Classes are doing Forest School in different weeks this term. The teachers/office will send a text out to let you know when the children may need to wear "Forest School" kit.

Thank you



A big thank you to all of those parents/carers who clapped our children out of school on the last day of term. A special mention to Y6 parent/carers who were the loudest and most generous with their support. The children were very modest as they left but we hope that they know how much we appreciate their resilience and perseverance over this last year. They are amazing!

Collection Times

Return to School Gate times from Monday 19th April:

	Gate/Entry time	Gate/Leave
Reception	8.45am Milne Walk	3.00pm Milne Walk
Year 1	8.50am Milne Walk	2.55pm Milne Walk
Year 2	9.00am Milne Walk	2.45pm Milne Walk
Year 3	8.45am Village Road	2.45pm Village Road
Year 4	8.50am Village Road	2.50pm Village Road
Year 5	8.55am Village Road	2.55pm Village Road
Year 6	9.00am Village Road	3.00pm Village Road

Social Distancing

Please, please, please can parents and carers line up at the correct times. Some people are arriving much too early and then other parents have to walk passed them. This can be very difficult with pushchairs. Anyone standing in the line could be asymptomatic, not showing signs of Covid but are carrying it or have it themselves.



School Meal Menus

Menus are emailed out to parents and posted on (at the bottom of) our home page on the school website: <https://hesterswayprimaryschool.co.uk/> .

Please call or email the office to update your email address, if you are not receiving these, as this is the way that communication is now taking place.

Remote Learning

Thank you to pupils and parents for returning the work packs. 70% of the packs were received by remote learners, we also had the children who attended Key Worker groups at school, complete their work approximately 20%. This was a fantastic response!

Children received certificates and rainbow pin badges for all of their efforts.

Please see the Spring Term parent questionnaire responses and feedback about home/remote learning on the home page of the school website.



Remote Learning Offer

If we do have to self isolate any classes, or the school, due to Covid-19 self-isolating or shielding, we will now only provide work online. We need to promote the children using laptops and tablets to do their work and engage with online instructional and feedback teacher sessions via TEAMS.



There were some children who did this in National Lockdown 3, hopefully we won't need to but if we do, then we need everyone online. We were able to loan out laptops last term, after receiving them from the Department for Education (DfE) and we can do the same.

Teachers are training pupils up so that they can access their pupil emails and any TEAMS meetings links, in order that they can be independent remote learners, when needed.

We would really value your feedback, if anyone did find the TEAMS meetings difficult. We will be sending out a questionnaire shortly.

School Cloud



Thank you to parents/carers who attended Parents Evening using our new online "School Cloud" system. One parent said: "Just wanted to compliment School Cloud! It's fantastic, really simplistic to use for the parents evening call I had.... Absolutely brilliant!"

86% of parents/carers who returned the Spring Term Questionnaire said that they appreciated the weekly phone calls that teachers made in National Lockdown 3. Some parents may already feel that they know enough about their child's learning.

We will be having another opportunity for parents/carers to talk to teachers next term. If you didn't receive any information about the parent's evening or found the system difficult to use then please let us know so that we can guide you through it next time.

If you need to contact your child's class teacher please use the class home learning email address.

Covid-19 Symptoms

If any child or family member has the Covid-19 symptoms, please continue to test if they have:
a high temperature, hot to the touch on chest or back - no need to measure temperature
a new, continuous cough
a loss, or change in sense of smell or taste.

Getting a Test and Self-Isolating

If your child or any member of the household is showing any symptoms call 119 or visit the 119 website to book to attend a GCC mobile testing site or get a home testing kit. Please self-isolate the household until the test results are negative or for 10 days or until well.

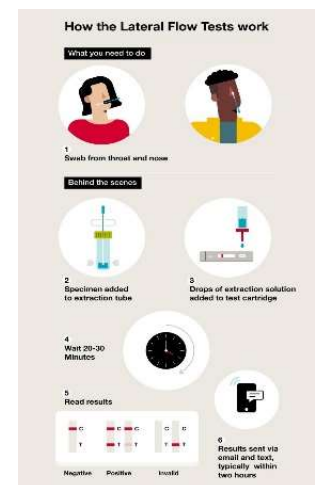
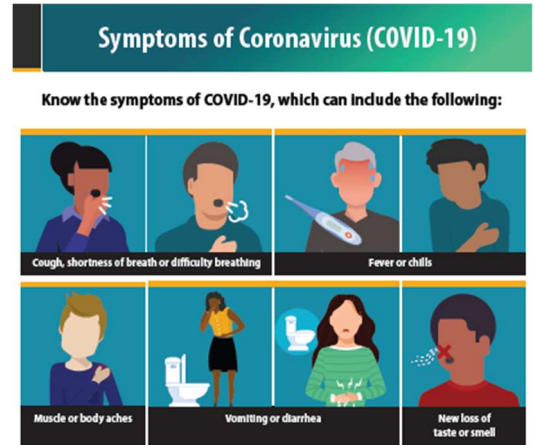
We have school/home tests at the moment, for pupils with symptoms, which are returning in 1-2 days. The mobile testing sites are super quick too.

<https://www.nhs.uk/conditions/coronavirus-covid-19/testing-and-tracing/get-a-test-to-check-if-you-have-coronavirus/>

<https://www.gov.uk/get-coronavirus-test>

<https://www.gloucestershire.gov.uk/covid-19-information-and-advice/mobile-testing-unit-locations/>

You can order Lateral Flow or Rapid Antigen Tests for your child and family to do, however this is your choice and responsibility. If the result is positive you have to book a Covid test through 119 and self-isolate the household and support bubble. If two voids, with no control line, a Covid test must be booked. <https://www.gov.uk/order-coronavirus-rapid-lateral-flow-tests>



Happy summer term!

With kindest regards,

Miss Kirsti Ashman and the HWPS Team.

