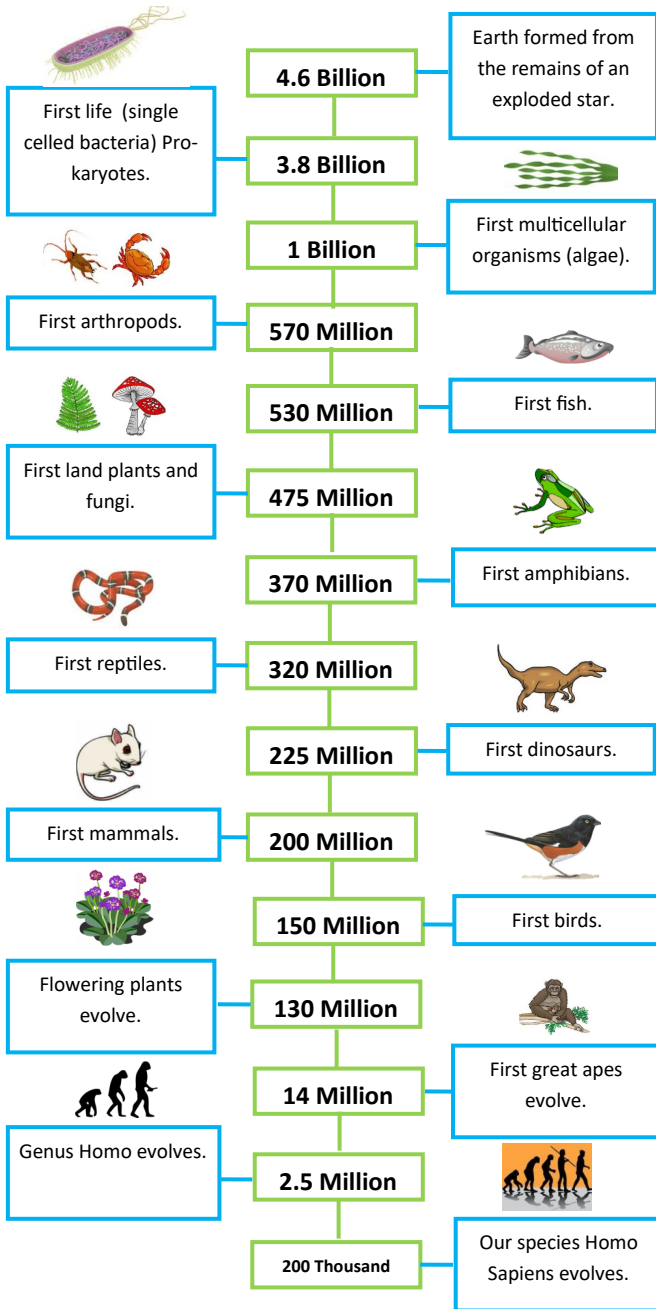
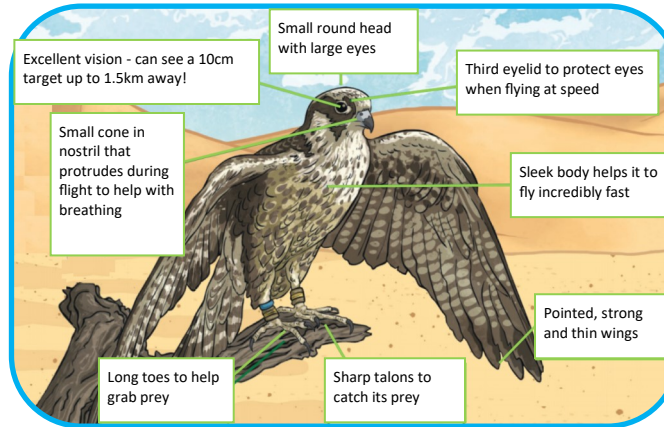


# Evolution and Inheritance - Year 6

## Evolution Timeline (years)



## Adaptation



## Inheritance

A crossbreed is a dog of mixed inheritance, whose parents are of two different breeds. Crossbreeds often display a mixture of their parents' characteristics, like this Labradoodle.



## Key Vocabulary

adaptation	The way a species changes to suit its environment.
characteristics	A feature or quality belonging to a person, place, or thing that serves to identify them.
evolution	The change of one species into another over millions of years.
environment	The natural surroundings in which something lives.
fossils	Any remains, impression, or trace of a living thing of a former geologic age.
inheritance	The 'passing down' of features from parents to children.
mutation	A change or alteration that occurs naturally.
species	A group of organisms that are very similar to each other and can produce offspring.
variation	The fact that not all offspring are identical.

## Objectives

We are learning to:

- Recognise that living things change over time and that fossils provide information about living things that inhabited the Earth millions of years ago.
- Recognise that living things produce offspring of the same kind, but normally offspring vary and are not identical to their parents
- Identify how plants and animals are adapted to suit their environment in different ways and that adaptation may lead to evolution.

### Previous Learning reminder:

Offspring are the young of living things

Most living things live in habitats to which they are suited..

Environments can change.

## Quick Check

- 1) What are offspring?
- 2) What word describes the fact that not all offspring are identical?
- 3) Name three adaptations of the bird of prey.
- 4) What are mutations?
- 5) How long ago did modern humans evolve?
- 6) Which evolved first, fish or dinosaurs?
- 7) How can we find information about creatures that lived millions of years ago?
- 8) What do we call the cross between a labrador and a poodle?
- 9) Which birds did Darwin study?
- 10) What is evolution?