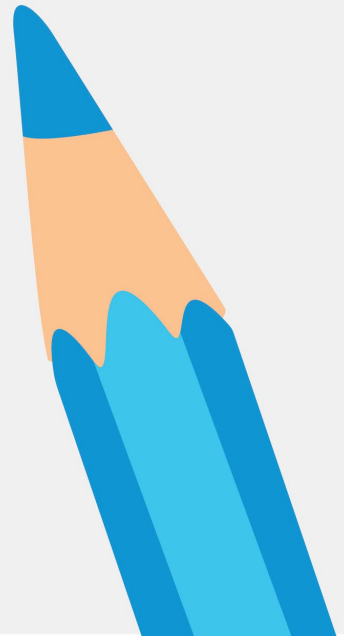
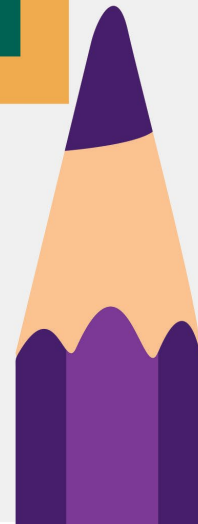
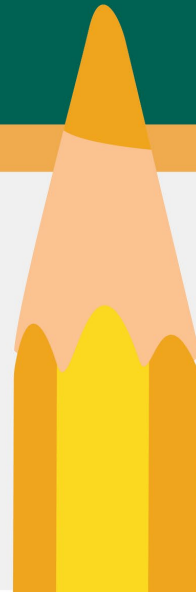
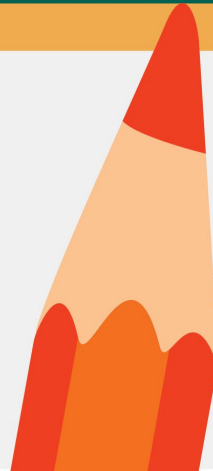
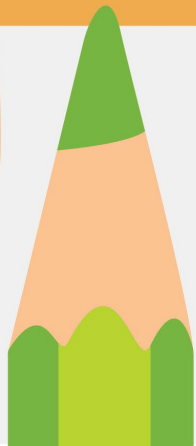
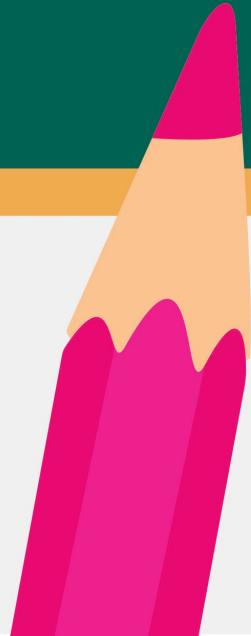
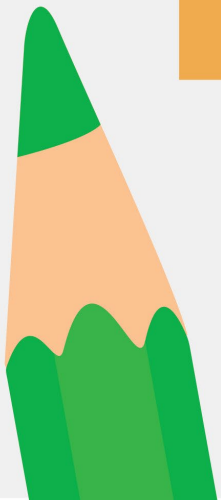
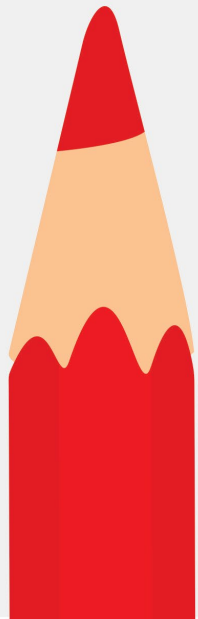
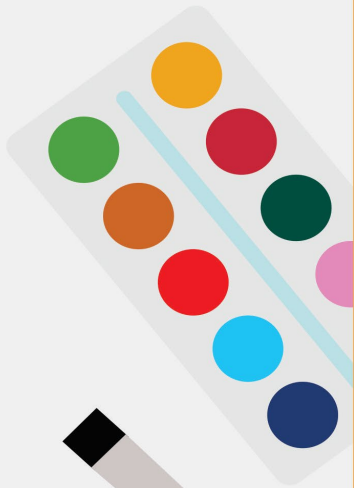




Welcome to
Reception!





Key Staff Introductions

Head Teacher – Miss Kirsti Ashman

Reception Class Teaching Staff: Mrs Gilbert-Green; Mrs Best and Teaching Assistant - Mrs Shawcross

SENDCO & Deputy Head – Mrs Mel Richards

Pastoral Support – Family Community Worker – Miss Parish

Attendance/Admin Officer – Mrs Green

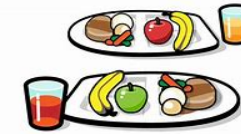
Finance/Admin Officer – Mrs Asquith

Catering Manager – Mrs Percival

Play and Lunchtime – Mrs Vincent and Mrs Gill



Why choose our school?



Days off school add up to lost learning

175 NON SCHOOL DAYS A YEAR
175 days to spend on family time, visits, holidays, shopping, household jobs and other appointments

0	6	15	19
DAYS ABSENCE (190 school days)	DAYS ABSENCE OR MORE	DAYS ABSENCE OR MORE	DAYS ABSENCE OR MORE
100%	96.9%	92.9%	Below 90%
EXCELLENT ATTENDANCE	SATISFACTORY ATTENDANCE	REQUIRES IMPROVEMENT	CAUSE FOR CONCERN





Hello! Our names are Mrs Gilbert-Green and Mrs Best.

We will be your teachers in September and can't wait to meet you all.

We job share: Mrs Gilbert-Green works Monday and Tuesday and Mrs Best works Wednesday, Thursday and Friday.



Mrs Gilbert-Green



Mrs Best



Mrs Shawcross

Hello! My name is Mrs Shawcross.

I am the Reception class teaching assistant.

I am in class all week and am looking forward to getting to know you all.



A Warm Welcome!

Hello and welcome to our school! We are really looking forward to you and your child joining us all in the coming months.

Reception is a very important year in your child's development.

Children can be excited but also may be anxious and worried about starting school.

There are lots of things you can be doing with them from now until September to help get them school ready...



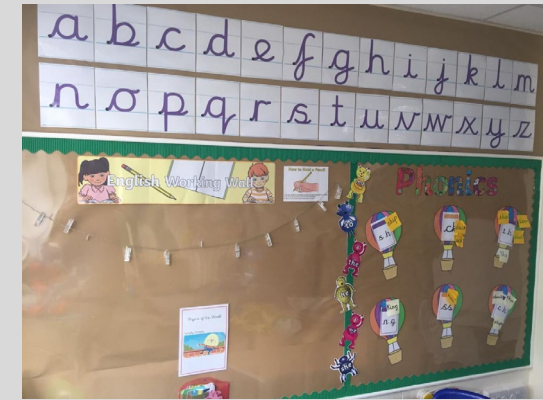
Promoting an Independent and Confident Child

Can your child begin to...?

- Go to the toilet on their own
 - Wash and dry hand
 - Put on and take off a coat
- Undress and put on a PE kit, including putting socks and shoes on
 - Tidy away and look after belongings
 - Recognise their name
 - Hold a pencil

Our Classroom...

We change the areas in our classroom regularly and set up different provision focused on our themes and children's own interests.



Our School...

We are grateful to have plenty of space in our school for indoor and outdoor learning...



School Uniform

Children will need the following:

- Blue jumper or cardigan preferably with the school name
- Yellow polo T-shirt
- Black or grey trousers/shorts/skirt/pinafore dress
- Black, grey or white socks/tights
- Blue checked summer dresses
- Sensible and protective shoes (Velcro rather than laces please!)
- Book bag
- **Please make sure everything is labelled**

Uniform and book bag can be purchased from 'Monkhouse' in town or online.



PE Kits

- **PE kits are provided by school.**
- **Please fill in form with the size of PE kit you require for your child**
- **Our PE day is currently Monday afternoon**
- **Children come to school on PE days wearing their PE kit**

White polo T-shirt

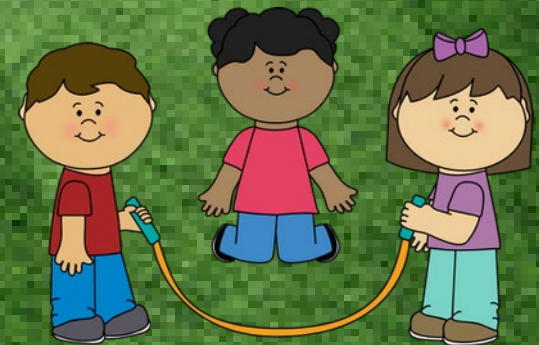
Navy shorts/skort

White socks

Trainers

P.E bag labelled (school logo PE bag available at
'Monkhouse')

Please ensure all clothes are labelled





All children will take part in Forest School regularly – we will let you know when they will need Forest School kit. Please use old worn clothes. They sometimes get very muddy!

Forest School kit:

- Long-sleeved top and trousers
 - Warm jumper
- Waterproof clothing if required
 - Wellies and socks
- Hats and sun cream when it is sunny

Food and drink at school



- Healthy snacks are provided everyday such as bagels and fruit.
- Milk is provided free for children up until their 5th birthday.
Forms to apply for free milk after they turn 5 in the Summer term welcome pack.
- Water bottles are provided for every child by the school.
- Currently - all Reception & KS1 children are entitled to receive free school dinners – please fill in form in welcome pack and return to school.
- If your child is entitled to free school meals, you may receive vouchers/hampers in the school holidays. Please apply as the school also receives £1345 per child as part of Pupil Premium funding. <https://www.gloucestershire.gov.uk/education-and-learning/school-transport-and-free-school-meals/apply-for-free-school-meals/>
- Children may choose to have a school dinner everyday or you can pick and choose when you want them to have a school dinner or bring a lunchbox. Children make their choice in the morning at registration. Menus are emailed to parents and put on the school website.
- Fruit and salad bar for children to add to their school dinner available each day.
- If your child brings a lunchbox please ensure it contains healthy food options that will keep your child full throughout our busy day!
- Please let us know of any allergies.

Induction Information

- Visits for class teachers to meet the children in nursery take place this term.
- All children will be invited over for 'stay and play' sessions this term – dates to follow.
- Phone calls to feeder settings to share information about children.
 - Handover of their transition records.



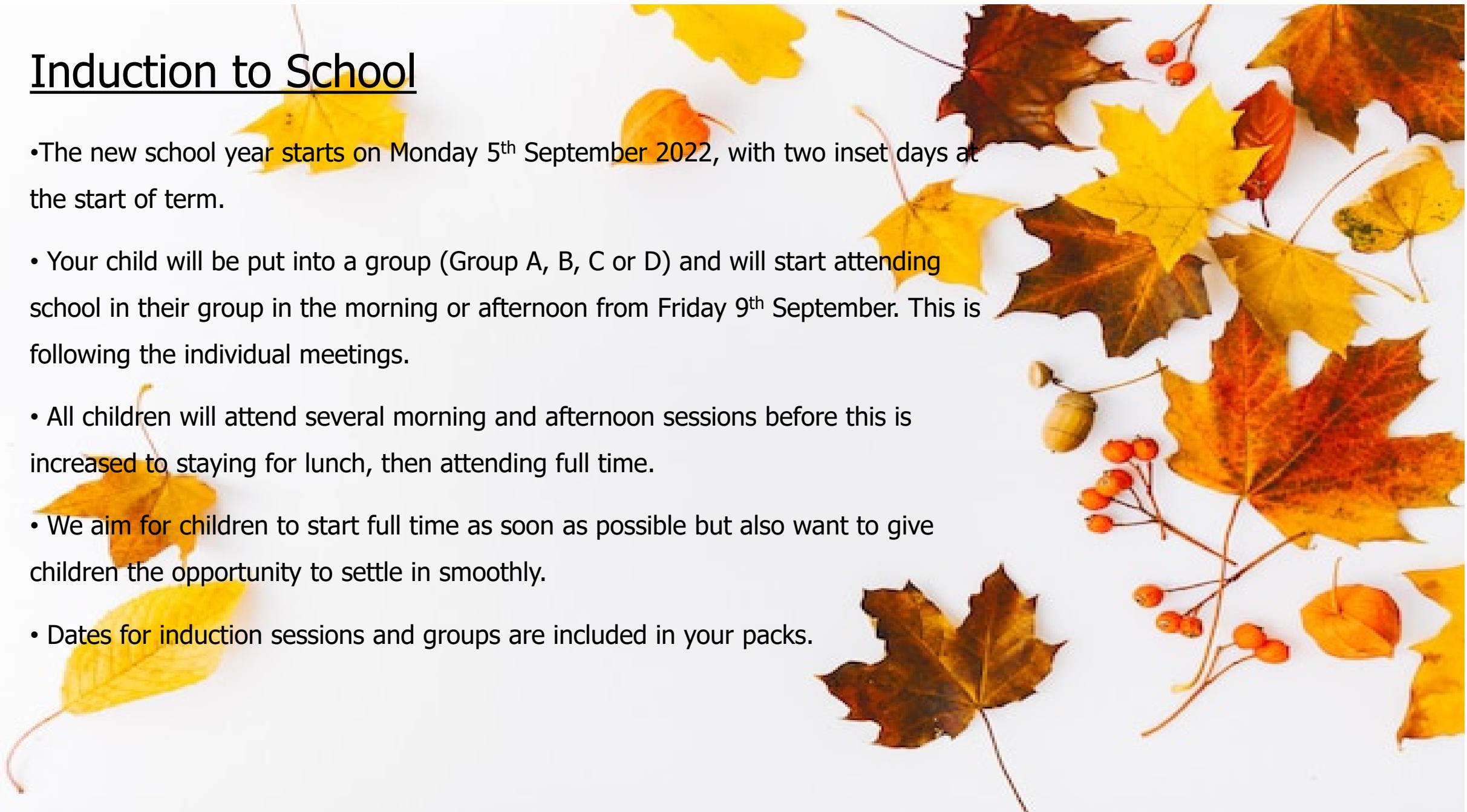
Induction Information

- Individual meetings will be arranged for September 7th and 8th – parent/carers will be invited into school to meet with class teaching staff and share information about your child to help them settle into school.
- Please sign up for meeting date and time today.



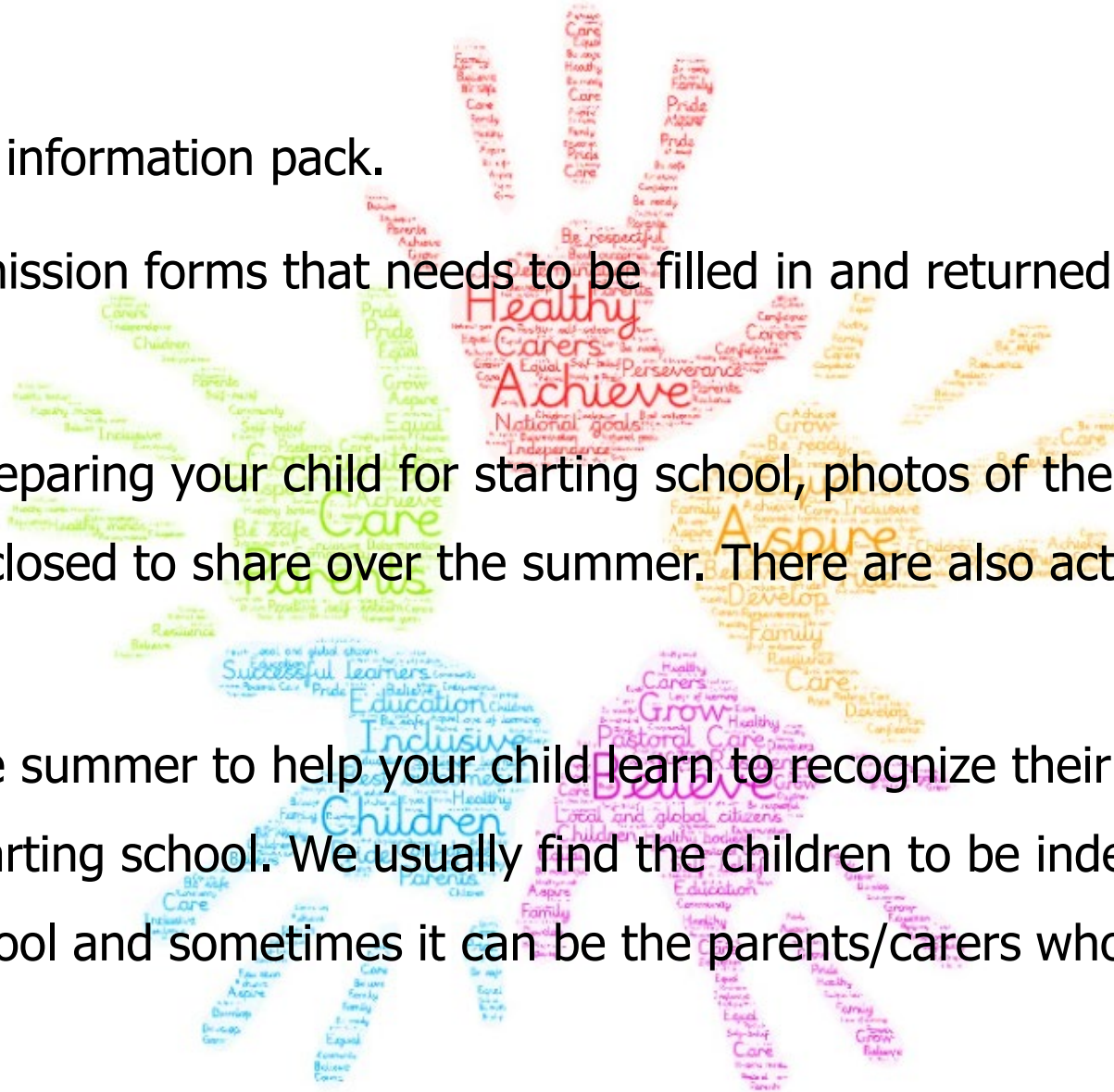
Induction to School

- The new school year starts on Monday 5th September 2022, with two inset days at the start of term.
- Your child will be put into a group (Group A, B, C or D) and will start attending school in their group in the morning or afternoon from Friday 9th September. This is following the individual meetings.
- All children will attend several morning and afternoon sessions before this is increased to staying for lunch, then attending full time.
- We aim for children to start full time as soon as possible but also want to give children the opportunity to settle in smoothly.
- Dates for induction sessions and groups are included in your packs.



Information Packs

- We will hand out your child's information pack.
- These contain important admission forms that needs to be filled in and returned to school as soon as possible.
- Other information such as preparing your child for starting school, photos of their class and teaching staff are also enclosed to share over the summer. There are also activities such as name cards.
- Please take the time over the summer to help your child learn to recognize their name and to talk positively about starting school. We usually find the children to be independent and excited about starting school and sometimes it can be the parents/carers who are more worried!





Hesters Way Primary School



HestersWaySch

Thank you

We hope you have found the information we have shared useful. Please take your induction packs and return them to school by 22nd July 2022.

Please do not hesitate to contact us if you have any questions. Our school telephone number is: (01242) 525616 or you can email: rechomelearning@hestersway.gloucs.sch.uk

Our school website is <https://hesterswayprimaryschool.co.uk/> for more information about our school.

Many thanks, Mrs Gilbert-Green and Mrs Best.

